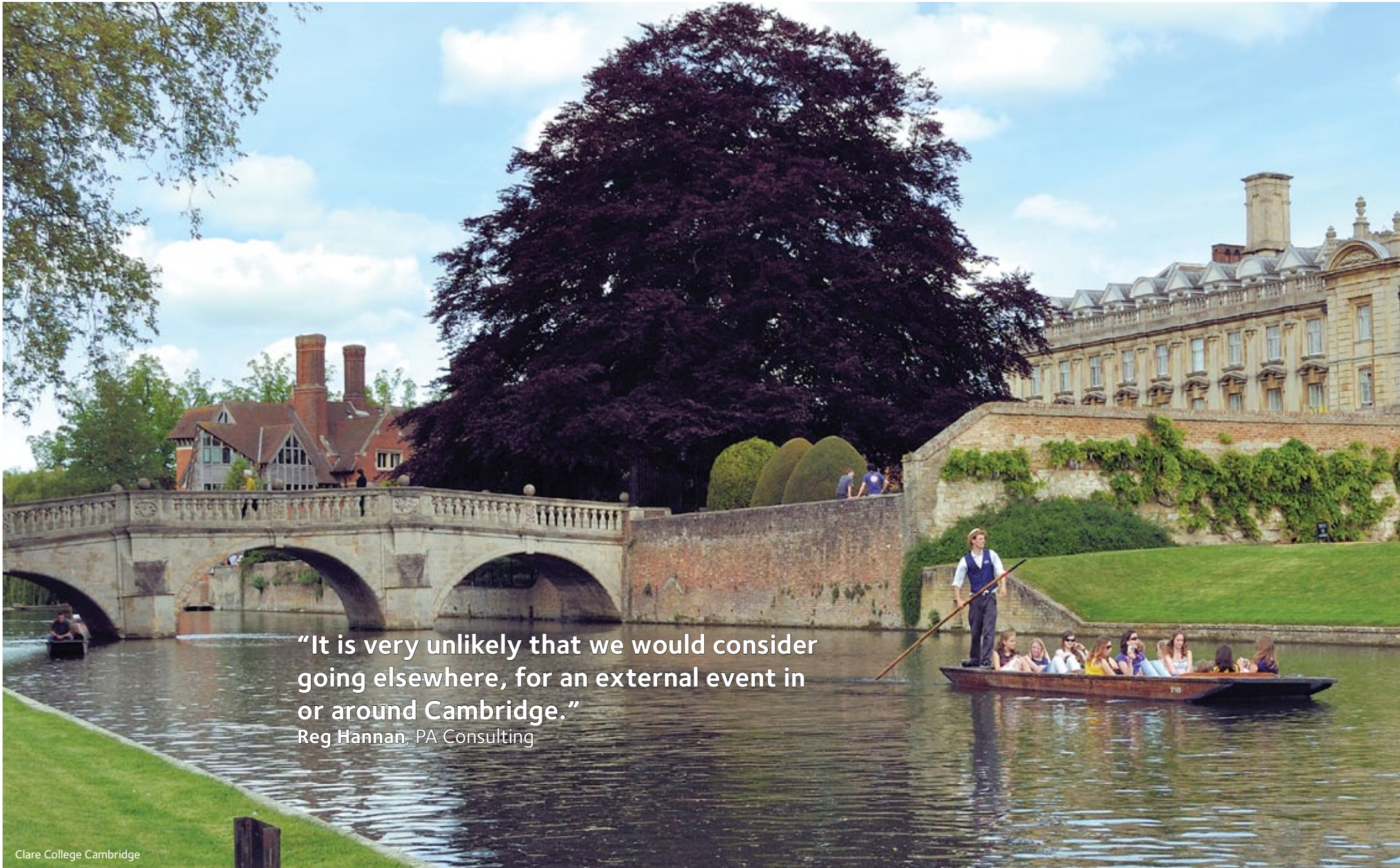


**CLARE COLLEGE CONFERENCING**  
CAMBRIDGE

An inspired choice of venue





**“It is very unlikely that we would consider going elsewhere, for an external event in or around Cambridge.”**

Reg Hannan, PA Consulting

Clare College Cambridge

[About the College](#)

[Gillespie Centre](#)

[Traditional Rooms](#)

[Catering](#)

[Accommodation](#)

[How to find us](#)

[Contact us](#)



## About the College

### Our History

Clare College was founded in 1326. Our foundress Lady Clare, led a tumultuous early life and was thrice widowed before the age of 30.

### Exquisite Location

Cambridge's second oldest college boasts 17th century architecture, stunning gardens and a convenient location in central Cambridge, either side of the River Cam.

### First Class Facilities

We offer flexible residential and day conferencing facilities in peaceful, relaxed surroundings, yet the College is just 2 minutes from the town centre.

### Professional Team

Our experienced, friendly team will work with you from your initial enquiry to the day of your event, ensuring your conference meets, or exceeds, your expectations and those of your delegates.

For further information on the history of Clare College, please click [here](#).

About the College

Gillespie Centre

Traditional Rooms

Catering

Accommodation

How to find us

Contact us

## The Gillespie Centre

### Our Green Credentials

Clare College has topped the Cambridge University Environmental Consulting Society league tables for the second year running, retaining first place for Green Management Ranking after a concerted effort by all those in the College.



The RIBA award winning Gillespie Centre opened for business in January 2009. The light, airy design and flexible meeting rooms offer all the ingredients for you to host memorable events and conferences.

The Centre, built to the highest standards of sustainability, uses solar thermal panels and a ground source heat pump for efficient heating and cooling.

Energy consumption will be kept to a minimum with extensive insulation and large, solar-coated, south facing windows will limit heat gain in the summer, keeping delegates cool at all times.

### Latest Technology

The Gillespie Centre is fully equipped with the latest technological facilities and supported by our knowledgeable, trained AV team who are available throughout your conference to assist with your individual needs.



[About the College](#)

[Gillespie Centre](#)

[Traditional Rooms](#)

[Catering](#)

[Accommodation](#)

[How to find us](#)

[Contact us](#)



“The venue was excellent, the meeting rooms were clearly signed and easy to find. The delegates all complimented the venue and the food. The staff were very helpful and should be congratulated on their professionalism throughout the day.”

**Tina Drew**  
NHS Foundation Trust

### **The Riley Auditorium**

The 150-seat raked auditorium is equipped with a full range of user-friendly, high quality audio visual technology and ‘8 hour seats’ with foldable writing tablets ensure maximum comfort for your delegates.

### **Elton-Bowring Room**

The double height Elton-Bowring room has floor to ceiling windows providing plenty of natural light with views of Lerner Court and the University Library.

A folding acoustic screen wall allows the space to be divided into two syndicate rooms both with fixed projectors and drop screens.

### **Glover Room**

Seating up to 35 delegates, the Glover Room, equipped with a fixed data projector, is an ideal meeting space for smaller groups.

### **Garden Room**

Our spacious, light-filled foyer is an excellent place for refreshments, lunches, drinks receptions, registration, exhibitions and formal dining. Delegates can enjoy the portico and terrace which extends into the landscaped Lerner Court.

Outdoor furniture is available during spring and summer.

### **Conference Office**

The conference office is available in the Gillespie Centre and is equipped with a computer, internet access, telephone lines and a printer/photocopier/scanner.

Please click [here](#) to view capacities and layout options.



Garden Room



Elton-Bowring Room



Glover Room

## Traditional Rooms



Our long-established, traditional meeting rooms are available during vacation periods and include all standard AV equipment and wireless internet access.

### Latimer Room

This recently refurbished room is located in Old Court with views of the Great Hall and Kings' College lawns. Seating up to 90 in theatre style, this room is spacious, yet intimate.

### Godwin Room

Located next to the Latimer Room, this smaller room provides an excellent space for private meetings or a break-out group. It can be accessed from outside or via a connecting door.





“I must say that with four years’ worth of previous summer conferencing behind me, I’ve never encountered a venue staff more friendly, gracious, and hard-working as yours at Clare.”

**Daniel Bosch**  
Director of Writing & Publishing  
at Walnut Hill School



Neild Room



Bennett Room

### **Bennett Room**

This room is ideal for workshops, boardroom and lecture style meetings and is located in Memorial Court where it can support the Gillespie Centre as a syndicate room or used as a plenary. Next door, the Neild Room enables greater flexibility for your conference and the Library Common Room can be used for refreshment breaks.

### **Neild Room**

An ideal meeting place for groups of up to 60, this scholarly room can be set up to your specifications.

### **Syndicate Rooms**

Small syndicate rooms are available in both Old Court and Memorial Court.



## Catering



### Lunch

We offer a wide variety of fresh, local produce and a range of conference menus to suit all groups. Select from the delicious bowl buffet menu, designed to reduce queuing for larger groups and encourage networking. Alternatively we can offer our two course seated lunch menu which includes dishes such as clare college special shepherd's pie. Many other options are also available.

### Drinks Receptions

Receptions can be held in our Garden Room or College Bar and in the summer months, in the Scholars' Garden overlooking the River Cam.

As an elegant way to round off your conference or as a prelude to dinner, we can offer mouth-watering menu of canapés including a chilli gaspacho with croutons served in a shot glass and homemade baby scones served with clotted cream & raspberry preserve. Please contact us for the full menu.



### Fine Dining

Our magnificent 17th century Great Hall seats 150 and is a stunning venue for large dinners. The Small Hall is a more intimate room seating up to 44. These rooms are available during vacations.

The Garden Room, available year round, offers a more contemporary venue and seats up to 100.

Our Catering Manager and Head Chef will be delighted to work with you in planning your lunch or dinner menu for your delegates with fine wines chosen from our cellar. We can help you source flowers and entertainment to complement your meal.

### The Buttery

The Buttery, in Old Court, seats up to 120 and provides a less formal self-service dining option for residential guests.

Please see the fine dining section of our website for our [menus](#).

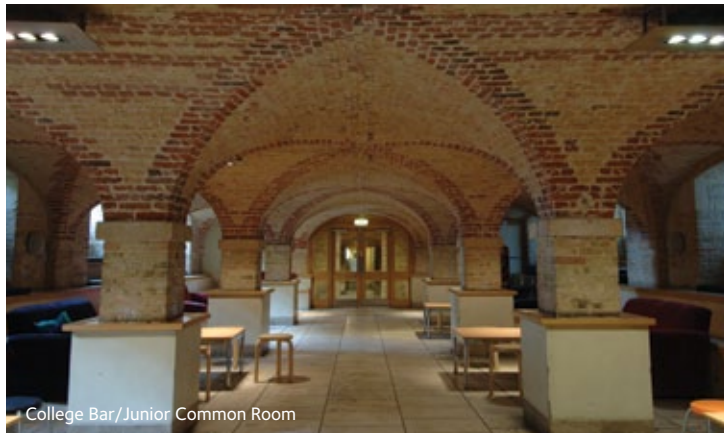


**“The food was outstanding – probably the best we’ve had in the thirty or so years I’ve been attending this conference at universities around Britain. Many thanks for everything!”**

Council for Slavonic and East European Library and Information Services Annual Conference



Great Hall



College Bar/Junior Common Room



[About the College](#)

[Gillespie Centre](#)

[Traditional Rooms](#)

[Catering](#)

[Accommodation](#)

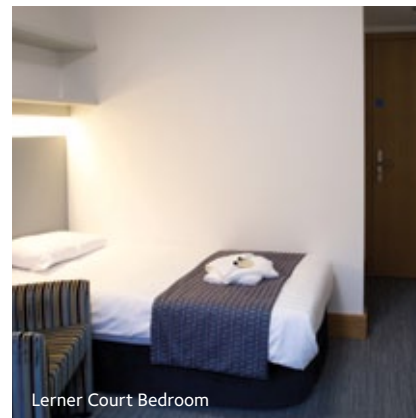
[How to find us](#)

[Contact us](#)

## Accommodation



Lerner Court Bedroom



Lerner Court Bedroom

“These are among the best conference facilities I have ever encountered, and the support has been excellent.”  
Will Hill

Anglia Ruskin University

200 bedrooms are available at the Memorial Court site during vacations, offering comfortable accommodation for delegates. 120 of these rooms are en suite; 60 having the benefit of a study/sitting room. 34 are located in Lerner Court adjacent to the Gillespie Centre. These executive rooms are finished to the highest standard and equipped with flat screen televisions.

All our bedrooms are equipped with wired internet access, toiletries and tea and coffee making facilities. Delegates may also access the College launderette for a small charge.

Please visit our website to see our [Useful Information](#) section.



Memorial Court Bedroom

[About the College](#)

[Gillespie Centre](#)

[Traditional Rooms](#)

[Catering](#)

[Accommodation](#)

[How to find us](#)

[Contact us](#)



Please click [here](#) for useful links to transport sites.

Clare College is easily accessible by road, rail and air:

**By road**

Cambridge is linked to London and the M25 by the M11 motorway. Exit at junction 12 for Barton Road or Junction 13 for Maddingly Road.

Access from the Midlands and North is via the A14 and A1. From whichever direction you approach you should make for the A14 to the north of Cambridge.

**Parking**

We can offer a small number of parking spaces at Memorial Court for the client team. Further car parking for up to 100 cars is available for a small extra charge at a nearby sports ground with prior notice.

**Rail**

Cambridge Station is about a 25 minute walk to Clare College with buses running every 8 minutes into

the centre of Cambridge. Taxis are also available outside the station.

Cambridge is less than an hour from London by train with frequent departures from King’s Cross and Liverpool Street stations. Some direct services operate from Birmingham, Liverpool, Manchester and Nottingham.

**Coach**

There are frequent services between London’s Victoria Coach Station and Drummer Street Bus Station in Cambridge. Most services will terminate from Cambridge Bus Station, from here it is only a 5-minute walk to Clare Old Court.

**Air**

Clare College is just 35 minutes from Stansted Airport via the M11 motorway. Heathrow and Gatwick are both approximately 2 hours away. Regular rail and coach services are available from all three airports.



## Contact us

“The help we received from the support team throughout the day was once again fantastic – they were always available when we needed them and offered help without prompting on a number of occasions. The additional help they provide on the day makes everything run so much smoother.”

**Laura Halstead**  
Cambridgeshire Horizons

The Clare College conferencing team has a wealth of experience and we would be delighted to help plan your next event.

If you would like to enquire about a potential booking or arrange a site visit, please give us a call or email us with your requirements using the details below.

### Clare College Conferencing Cambridge

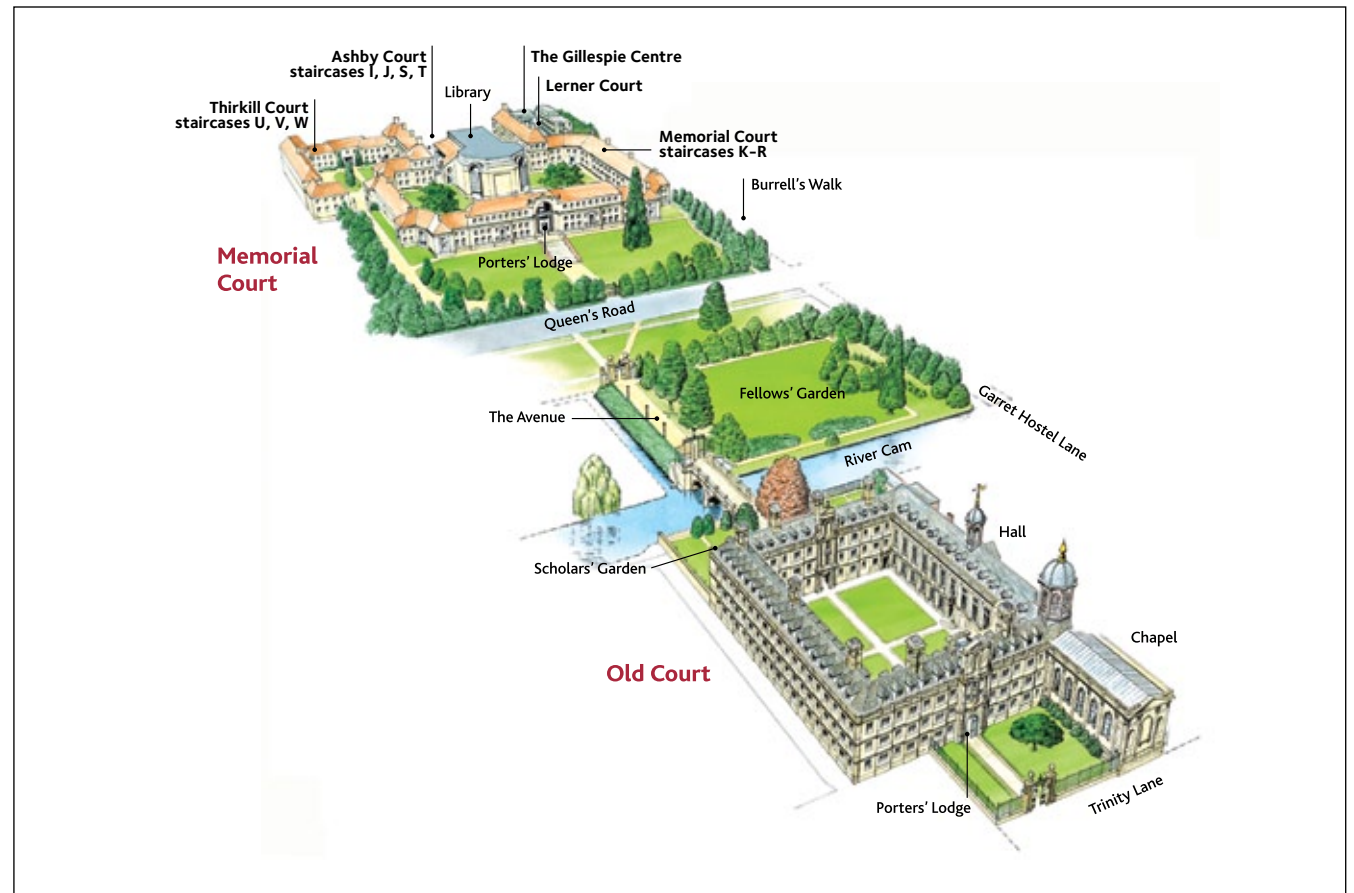
Memorial Court  
Queens Road  
Cambridge CB3 9AJ

**T**+44 (0) 1223 333203

**F**+44 (0) 1223 357664

**E**conferencing@clare.cam.ac.uk

[www.clareconferencing.com](http://www.clareconferencing.com)



About the College

Gillespie Centre

Traditional Rooms

Catering

Accommodation

How to find us

Contact us